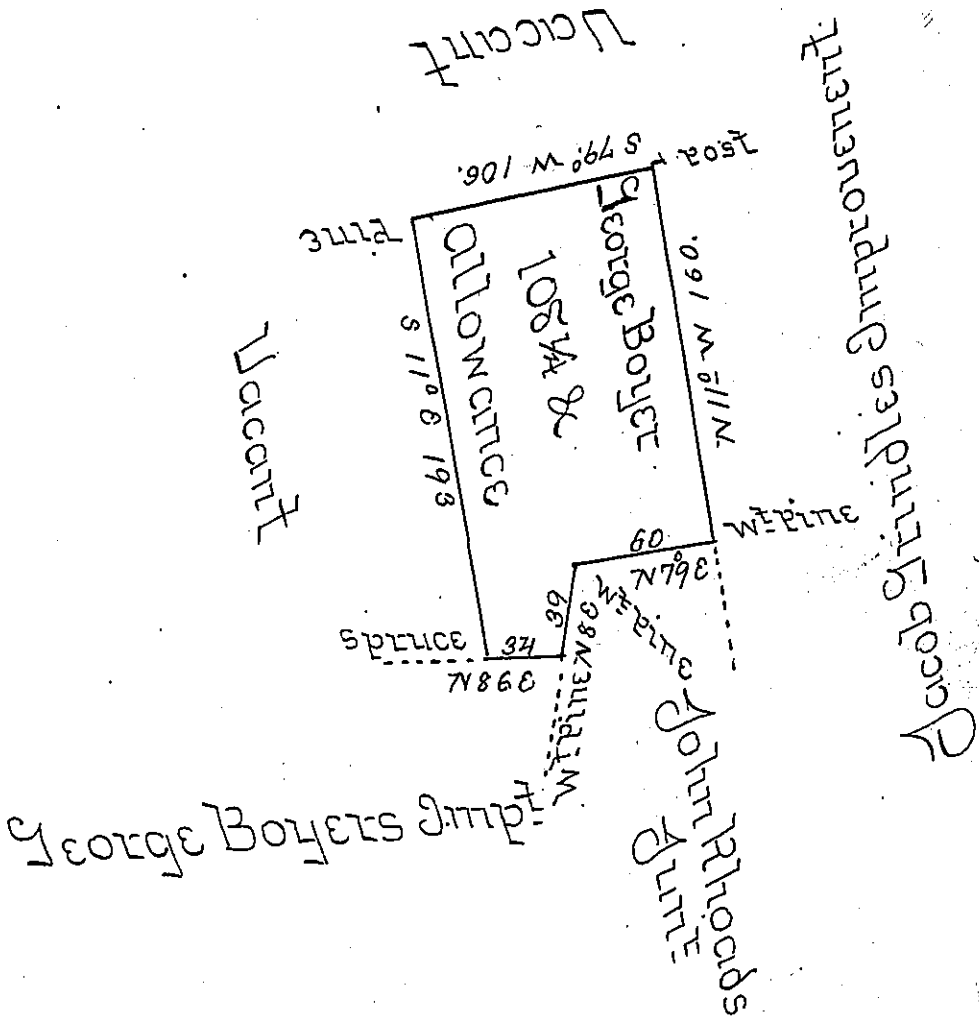


Note this bond was unimproved  
 when the warrant issued  
 To Samuel Cochran Esq  
 Surveyor General of Penna  
 } Musser Wells  
 Deputy



Situate on the East side of Stony Creek in Stony Creek Township now Somerset County & surveyed the 14<sup>th</sup> day of June 1796 by Alexander McClean Esquire late Deputy Surveyor in pursuance of a Warrant dated the 3<sup>rd</sup> Day of May 1792 as appears by his Official Draught remaining in my office & Certified this 4<sup>th</sup> day of April 1822

Musser Wells Deputy

To Samuel Cochran Esquire  
 Surveyor General of Pennsylvania

IN TESTIMONY that the above is a copy of the original remaining on file in the Department of Internal Affairs of Pennsylvania, made conformably to an Act of Assembly approved the 16th day of February, 1833, I have hereunto set my Hand and caused the Seal of said Department to be affixed at Harrisburg, this first day of March 1904.

*John B. Person*  
 Secretary of Internal Affairs.